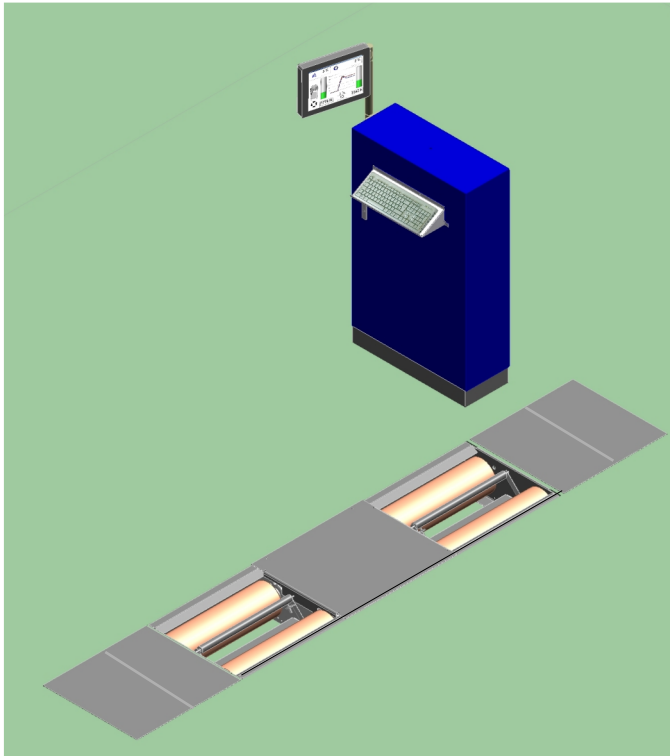


ATL Roller Brake Tester

for Class III & IV vehicles

B67.6 - ATL No. 24649



- Modern, fully-digitized, computer controlled brake test stand for passenger car and light trucks up to 3.5 tons. total gross weight
- Reflexion-free, swivelling TFT monitor with control cabinet allowing excellent readings
- Extremely space saving control cupboard, providing an easy way of use for both testing and administration
- Simplest operation by manual or automatic test sequences with operator guidance following ATL rules, database recording and automatic printer control, allocation of the axles, brake systems, rolling resistance, ovality results even without the available remote control
- Real Time Slip monitoring of the wheel peripheral speed ensures high reproducibility of maximum brake forces measured
- Fully automatic weighing system ensuring accurate readings and repeatability
- Monitoring of all safety-relevant test sequences including restart automatic and drive-out assistance
- Prepared to accept several interfaces for communication jobs with PC and further networking standards
- Quality compliant with DIN ISO 9001:2000
- CE - certified

Description

The SAXON B 67.6 based on a compact roller set, hot-dip galvanized and was designed in such a way that it can be used in the most varied versions of available foundations. The installation of the roller bed will be done as compact unit, indoors or outdoors. The roller covers are beared on outside corner left and right being two times flapeable for space saving reasons. The weighing system is designed to be underneath the roller bed. The test stand comes calibrated and prewired up to the display cabinet with 15m cable length.

The computer controlled system permits the test of whole vehicles within one process with and without using the available remote control. The system does not allow wrong measurements by an expert behaviour pattern, assigning fully automatic axles and brake systems, permits unmistakable measurement of the rolling resistance, ovality of each wheel with and without automatic printout.

The new control cabinet with the nearly reflexion-free, swivelling TFT monitor allows excellent readings, is extremely

space saving and provides an easy way of use for both testing and administration. It additionally supports you while talking to your customer explaining the diagnosis and test result leading in addition orders for you.

The software is designed as a Windows bases application running on modern PC's with it's own database in the background. The SAXON DataCenter and it's archive module cares about all staff belonging to recording, evaluating and printing of results any time from past MOT tested. The integrated diagnosis module cares about all real time test results, it's sequences involved and automatic printer control if desired. Printer control via a Ethernet network is also supported.

The future-oriented system is ready for later upgrades and extensions with test equipment cross-linking like sideslip tester, suspension tester, gas analyser and smoke meter, head light tester, speed tester or dynamometer. Even whole test lines as a possible target for now or in the future are supported.

The Roller Brake Tester is approved and CE certified. It's produced in accordance with the requirements of the German Institute for Standardisation and DIN ISO 9001:2000 exclusively and solely by the manufacturer in Germany.



Standard display cabinet without extra keyboard support kit on front panel

Technical Specification

Roller coating	Plastic / Corundum
Roller diameter	200 mm
Test speed	5.0 km/h
Display	0 ... 600 kgf
Axle load maximum	4.000 kg
Test Width	800 - 2200 mm
Motors	2 x 4 kW
Voltage	400V, 50Hz, 3 phases
Fuse rating	3 x 25A

Outside Dimensions

Width	720 mm
Length	2280 mm
Depth	355 mm
Weight approx.	650 kg

Scope of Supply

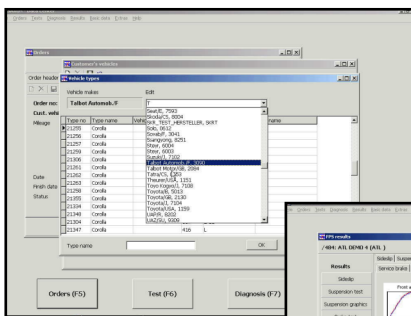
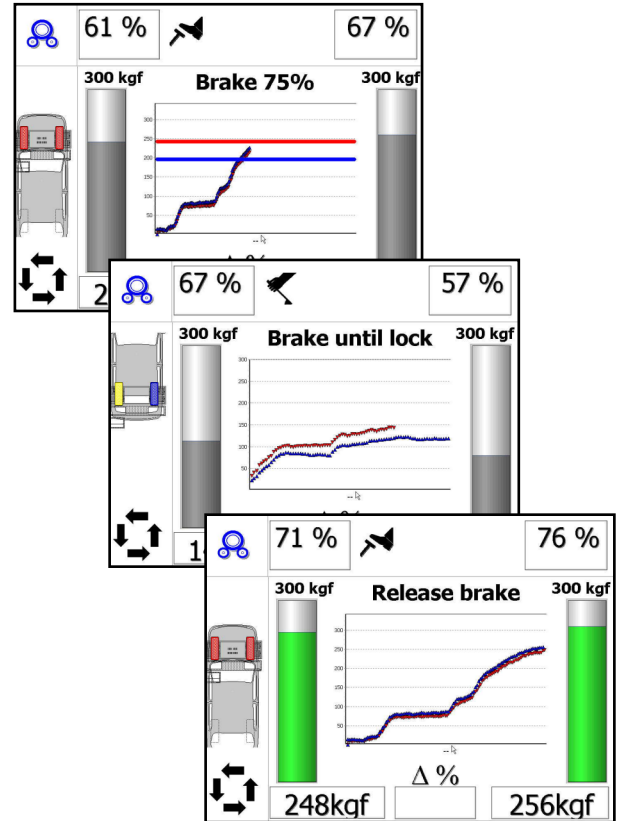
- Compact roller bed with 15m pre-wired
- Weighing facility
- Control cupboard include modern PC and 19" TFT display
- ATL – Software application
- Remote control
- Roller covers, two times flapable

Options

- A4 (b/w, colour) printer include target value evaluation
- 4WD switching
- Motorcycle adapter (incl. approval for class I & II)
- Pedal effort meter (cable or radio controlled)
- Analogue pointer display (as parallel unit)
- PC - Software for additionally parallel displays
- Networking facilities
- ATL upgrade kit for existing installations

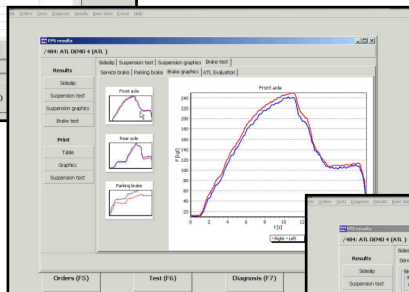
Diagnosis Module

Real time result display with clear indication of the brake system's behaviour for rolling resistance, ovality, brake force, brake efficiency and imbalances, available in kgf or alternatively in N as physical display values



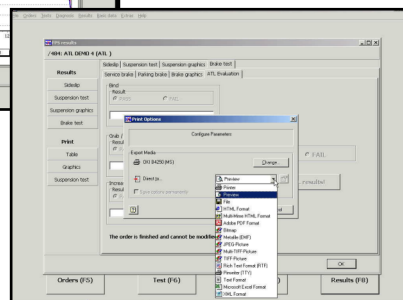
DataCenter

A central database, fully logic order processing steps including inspector administration turns the system into a real professional application



Archive Module

The optionally available Client-Server structure provides the possibility to separate the jobs for data administration and creating a printout form testing vehicles.



Clear test results from database for each axle and wheel, tabulary and graphically are provided.

This includes export interfaces for 14 different file formats transferring those result to other databases and locations