



Codi International Ltd.

OMA 547SP MOT Single Plate Wheel Play Detector



- **Electro hydraulic operation**
- **Operating plate with flat surface**
- **Suitable for Class IV and VII MOT Testing**
- **Heavy duty design**

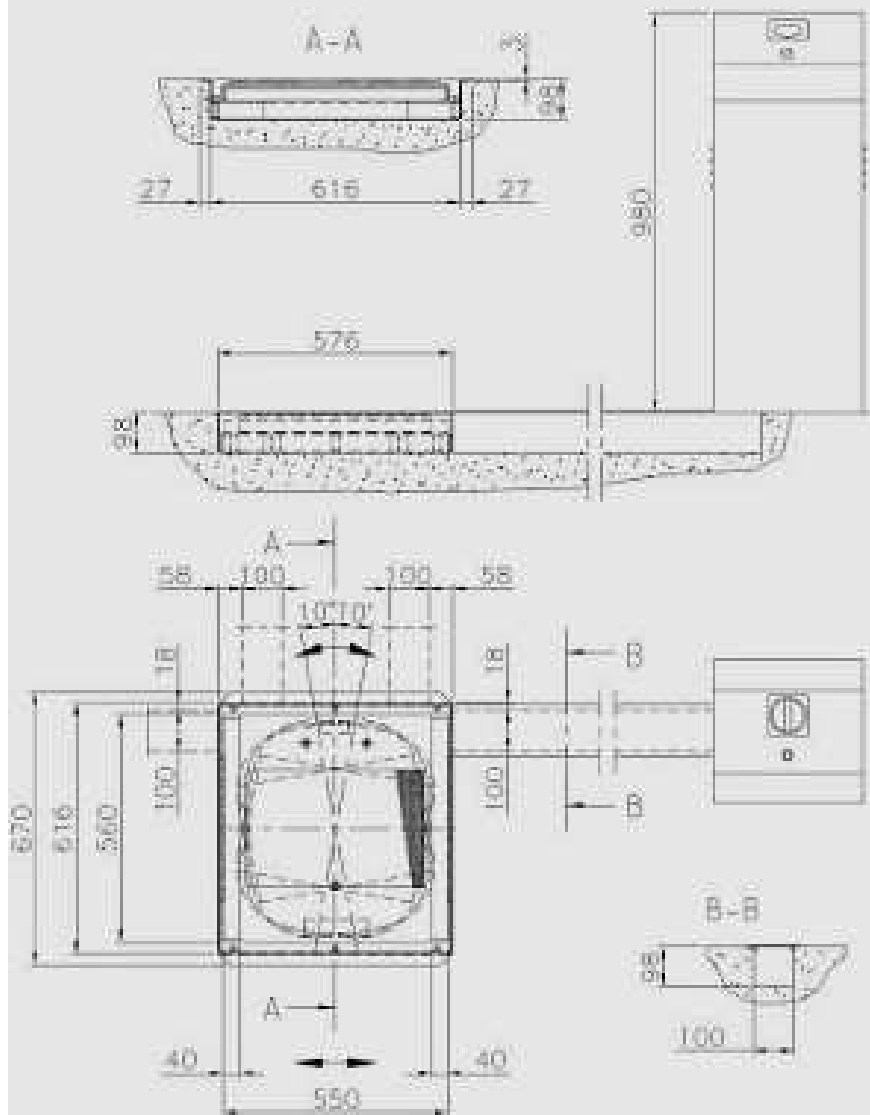
The OMA 547SPF Hydraulic Play Detector system from is approved for use in both Class IV and VII MOT / ATL testing.

The Play Detector system is comprised of two principal elements. Firstly, a control cabinet, which can be located in an area adjacent to the inspection pit and contains the motor, hydraulic pump and control valve system. Secondly, the single hydraulically operated wheel play detector plate, which can be installed on either side of the inspection pit. The plate generates both a turning movement as specified below and a lateral movement.

The single plate design allows much easier installation avoiding the need for complex pipe runs. Control is by a low voltage handset which incorporates an inspection lamp. The paly detector is available in single phase as well as 3 phase versions.



PLAY DETECTOR DIMENSIONS



FLOOR

The play detector must be installed on a horizontal concrete bed with a minimum thickness of 180 mm built and a resistance minimum 25

For further information please do not hesitate to contact us or visit our website:

Codi International Ltd
Abbey Lodge, Monmouth Road,
Tintern, Chepstow, NP16 6SF

Tel: 01291 689427
Fax: 01291 689499
info@codi-international.com
www.codi-international.com